

A performance of radio frequency and signal strength of LoRa with BME280 senso

by Puput Dani Prasetyo Adi

Submission date: 28-Oct-2021 03:30AM (UTC+0700)

Submission ID: 1685904798

File name: 9._Karya_tulis_9-14843-41056-1-PB1.pdf (1.19M)

Word count: 5142

Character count: 26361

A performance of radio frequency and signal strength of LoRa with BME280 sensor

Puput Dani Prasetyo Adi¹, Akio Kitagawa²

^{1,2}Department of Electrical Engineering, University of Merdeka Malang, Indonesia

²Micro Electronics Research Laboratory, (MeRL), Kanazawa University, Japan

Article Info

Article history:

Received Aug 15, 2019

Revised Jan 13, 2020

Accepted Feb 4, 2020

Keywords:

Barometric
BME280
IoT
LoRa
Pressure
Temperature

ABSTRACT

LoRa is a Radio Frequency module that can send packet data up to 3 km in FSPL. LoRa has 3 different Frequency Radios i.e, 915 MHz, 868 MHz, and 433 MHz. LoRa testing is based on different distances, BME280 provides Barometric Pressure, Temperature, and Humidity data. An analysis from the results of the Received Signal Strength to the distance (m) to the farthest point to prove and provide QoS data from LoRa 915 MHz. Sensor nodes are built using ADR and Automatic sleep mode algorithms. Communication systems between nodes are built dynamic sensor nodes in mesh networking. Monitoring signal transferring on the 915 MHz Frequency waveform is carried out using the Textronix Spectrum analyzer. Based on the BME280 Data packet transmission from the LoRa 915 MHz Transmitter to the Receiver Receiver at a distance of 100m is -84 dBm and at a distance of 500m is -107 dBm. The LoRa Internet Gateway has 2 types of settings, i.e, application, and gateway, this setting is to find out the location of the gateway with longitude and latitude. Furthermore, the gateway holds Sensor data from the End node, while the Application Server displays sensor data in the form of Graphics in realtime.

This is an open access article under the [CC BY-SA](https://creativecommons.org/licenses/by-sa/4.0/) license.



Corresponding Author:

Puput Dani Prasetyo Adi,

Department of Electrical Engineering,

University of Merdeka Malang,

Taman Agung Street Number 1, Malang, Post Code 65146, Indonesia

Email: puput.danny@unmer.ac.id

1. INTRODUCTION

The internet of things (IoT) technology is growing rapidly, the development of radio frequency or module e.g., GPRS, Narrowband-IoT, SigFox, and LoRa. the development of Internet gateway devices technology (LoRa Gateway, Digi Zigbee Gateway, Raspberry Pi Gateway, etc.), Security type [1], protocol type, node sensor technology, power consumption that supports lifetime of sensor nodes, routing protocol, long rangeability on radio frequency or frequency band is very influential in the development of the internet of things (IoT) technology, at present the company's demand (DSM) on LPWAN [1] and the internet of things (IoT)-based technology is increasing [2], this study is detailed in research [1]. In research [3] surveyed the differences between LoRa and NarrowBand-IoT, survey parameters included QoS, latency, reliability, and range. therefore, In research [4] the comparison of radiofrequency modules such as GPRS, Narrowband-IoT, SigFox, and LoRa was tested at a very long distance of 7800 km², proving that Radio module capability is capable of reaching very long distances. In research [5] LoRa communication was built to make smart energy Campus Testbed [5-7]. So that an appropriate architecture is needed to handle complex sensor node

connections in the internet of things (IoT) and how to build architecture in various systematical domains [8]. Not only in indoor capabilities and short distances such as using bluetooth RN42 [9] which shows the transferring of data from the transmitter to the receiver is 20 meters then supported by the Raspberry Pi 3 Model B as an Internet gateway. furthermore, In research [7] the Raspberry Pi is used as a web server in monitoring the energy of LPWAN [10] on each sensor nodes supported by Linux script and radio module under testing, the testbed's components parameter includes the App inventor App on the tablet to create a GUI on a tablet based on blockly programming. In research [1] using the same board, Raspberry Pi, which is built security level method using the ARSy Framework on communication between Raspberry Pi 3 Model B and DS18B20 sensor, from this research we can determine the level of security of data in the Wireless Sensor Network. In research [11, 12], the radio frequency used is Zigbee with the farthest range of 120 meters [13], so a long-range frequency radio is needed to cover the outdoor area. So it is necessary to expand the capacity of the RF signals to the outdoor. For this reason, this research was made, namely analyzing the ability of the LoRa 915 MHz module in sending BME280 data at distant distances and locations. therefore, a scope on this research is transferring the BME280 data packet at LoRa transmitter to LoRa receiver at frequency 915 MHz which will produce receiver signal strength (RSS) value in -dBm at different distances. In research [14] One important reason for IoT is the Power consumption factor. e.g. LoRa and the global positioning system (GPS) require high power consumption, one method that can be used to reduce power consumption is fingerprint positioning method. The sender and receiver program on LoRa uses C language on the Arduino integrated development environment (IDE). accordingly, Problems that occur when sending packet data using the LoRa radio frequency module is the presence of obstacles in the form of mountains, buildings, trees, etc. which causes a greater percentage of the attenuation signal (-dBm).

2. RESEARCH METHOD

2.1. Research architecture

Figure 1 shows the overall research architecture, there are 3 parts shown in Figure 1. On the left (case_analytic_1) is an analysis of ADR (adaptive data rate) algorithm [15] which aims to maximize the lifetime of sensor nodes and the effectiveness of the overall networking if added with a large number of nodes, in the center (receiver sensitivity), transmitting multi-point data signals Tx node LoRa to Rx Node LoRa produces an analysis of the budget link consisting of transmission power, antenna gain, connector loss, factor fresnel zone equation, etc (Case_Analytic_2) [16]. In Case_Analytic2 the analyzed signal is Chirps (compressed high-intensity radar pulse) [17-19]. furthermore, Case_Analytic_3 is the result of an internet gateway analysis consisting of an internet server and application server and its analytic data, i.e. uplink and downlink which can be analyzed in detail.

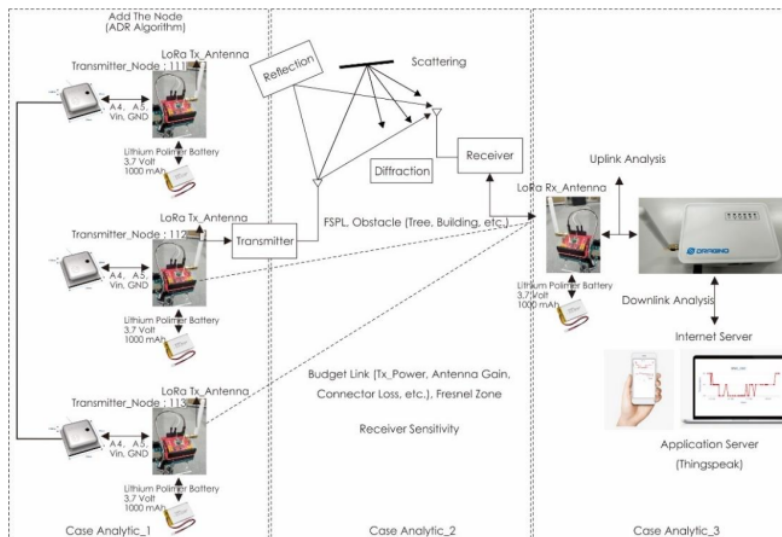


Figure 1. The architecture of this research

The flow diagram of Figure 1 shows the process of beginning to the end of this research, therefore, three parts of the flowchart are interrelated ie, end nodes/mote/end devices of LoRa and this transmitter will be added up so that the data rate will increase for that it needs an algorithm that maintains network stability and maximizes the lifetime of the sensor node using the ADR algorithm. Adaptive data rate (ADR) the algorithm focused on the algorithm used in the internet of things radio frequency LoRa communication system, this algorithm is used as an approach in handling data transmission rate on the network (LoRaWAN) [20] that is being built and has many sensor nodes that are being built interconnected, this has to do with how to increase the effectiveness of IoT-based networks and maintain the level of life-time for sensor nodes on complex networks. In this case, all end nodes/endpoints or motes can dynamically adjust the data rate that will be sent in the process of transmitting uplink and downlink data. If the end point/end node/mote is in ADR Active mode, the Server will be able to determine the data rate via the ADR (adaptive data rate) as documented in LoRaWAN [21, 22]. ADR algorithm parameters include RSSI (dBm) and SNR (dB), uplink and downlink processes between the application server and the server node. furthermore, three transmission parameters [23, 24] in adaptive data rate (ADR) i.e, spreading factor (SF), bandwidth (BW), and transmission power (dB). Further explanation of the ADR Algorithm can be seen in the flowchart of ADR algorithm in Figure 2 (b).

2.2. Hardware spesification and equation

2.2.1. BME sensor

The BME280 Sensor in Figure 3 is a multi-sensory and applied in the health care application (e.g. Spirometry). in previous research, health care application using different sensors in research [11, 20, 25, 26] i.e, blood pressure and pulse sensor. In research [27] the sensors used are the electrocardiogram (ECG) sensor, body temperature sensor, pulse rate, and oxygen saturation signal using MySignals and LoRa. There are 3 data on the BME280 sensor i.e. atmospheric pressure (hPa), temperature (DegC) and humidity (%). Atmospheric pressure (hPa) is the pressure at any point in the Earth's atmosphere. Almost the same as the hydrostatic pressure caused by the weight of the air above the measurement point. The formula for calculating atmospheric pressure is following the formula 2. $\text{Log}_{10} P \approx 5 - (h - 15500)$, where the value of P is pressure (Pascal) and h is the height (meters). Furthermore, the temperature has the default unit Degree Celcius. the BME280 sensor, the unit used is degree celsius and detects conditions in the environment and results in precision. furthermore, to change to Kelvin (K), Reamur (°Ré) or Fahrenheit (°F) C language is used in the Arduino IDE. If the DegC value is known, to be changed to another temperature unit to $r = c * 4/5$; $f = (c * 9/5) + 32$; $k = c + 273.16$; furthermore, humidity (%) is the amount of water vapor in the air that is not visible to the human eye, this amount of water vapor will determine rainfall, dew or fog. Furthermore, Figure 3 describes the BME280 sensor diagram block, There is a Pressure and temperature sensing element that is converted from analog to digital using analog to digital converter (ADC) to logic gate and continues to 6 output pins ie.SDI, SDO, SCK, CSB, VDD and GND, and just 4 pins used i.e. SDA, SCL, VDD (3.3 volt) and GND.

2.2.2. RFM95W/96W for dragino LoRa

The LoRa type used is the Dragino LoRa 915 MHz, which is compatible with the Arduino UNO Board. therefore, on the Dragino LoRa 915 MHz, the chip device used is RMF96, the transmit power is 20 dB, as shown in Figure 4 and the hardware specification in Table 1.

2.2.3. RSSI of LoRa

The RSSI stands for received signal strength indicator which is expressed in mW and dBm (when measuring), the RSSI range is -30 dBm (strength signal) and -120 dBm (weak signal). In this research, RSSI of LoRa radio signals will be analyzed within a distance of the free space area and obstacle area (tree, building, and hill). This Obstacle will cause attenuation of the signal due to three factors, i.e, diffraction, detailed reflection and scattering will be explained further. RSSI is also caused by SNR (signal noise ratio) [8] which is expressed in units of dB. The SNR range is -20 dB and +10 dB. A signal that is close to +10 dB, signal reception becomes poor or slightly corrupted. furthermore, In general, the RSSI formula is shown in (1).

$$\text{RSSI (dBm)} = -10n \log_{10}(d) + A \quad (1)$$

Where value A is the signal strength at a distance of 1 meter in units of dBm and n is the value of path loss exponent value [28]. moreover, This RSSI can be developed in cases of research such as the coal mine underground locomotive [4], the reason for taking cases in this research is because the poor environment of

coal mine underground, so that it is difficult to determine the position of locomotive so that it can be solved with an approach to positioning algorithm. The RSSI approach to path loss (PL) can be seen in (2).

$$PL(d) = PL(d_0) + 10 \log \frac{d}{d_0} + X\sigma \quad (2)$$

Where $PL(d)$ is a path loss from transmitter to receiver at a certain distance (d), d_0 is a reference distance at 1 meter. $X\sigma$ is a gaussian distribution random variable, where the mean or average is 0 and the standard deviation is σ (4-10). furthermore, From the PL formula above, it can be seen that the value of RSSI of node at distance d is as in (3).

$$RSSI(d) = P_{send} + P_{amplify} - PL(d) \quad (3)$$

P_{send} is a Power Transmitter, $P_{amplify}$ is a gain of antenna [29, 30]. and the RSSI formula is the same as looking for the value of A (4).

$$A = P_{send} + P_{amplify} - PL(d) \quad (4)$$

Where A is the RSSI value at a distance of d_0 or a distance of 1 meter. So to get an estimate of the distance (d) between nodes of the RSSI parameter and A, it can be seen in (5). The value of n is path loss exponent 2-5, each environment is different [28], for example, Free Space, n value is 2.

$$d = 10^{((A-RSSI-X\sigma)/10n)} d_0 \quad (5)$$

2.2.4. Energy and power signals

On a signal $x(t)$ can be known the average value of energy signal E with range $0 < E < \infty$, as in (6).

$$E = \int_{-\infty}^{\infty} |x(t)|^2 dt \quad (6)$$

And to get a power signal $x(t)$ $0 < P < \infty$ for average power, stated in (7).

$$P = \lim_{T \rightarrow \infty} \frac{1}{2T} \int_{-T}^T |x(t)|^2 dt \quad (7)$$

2.2.5. PathLoss (dB) and attenuation signal

Linear path loss can be stated with (8), where a P_t divided a P_r .

$$P_r = \frac{P_t}{P_r} \quad (8)$$

Path Loss can also be defined as dB, where the dB value is not negative, as in (9)

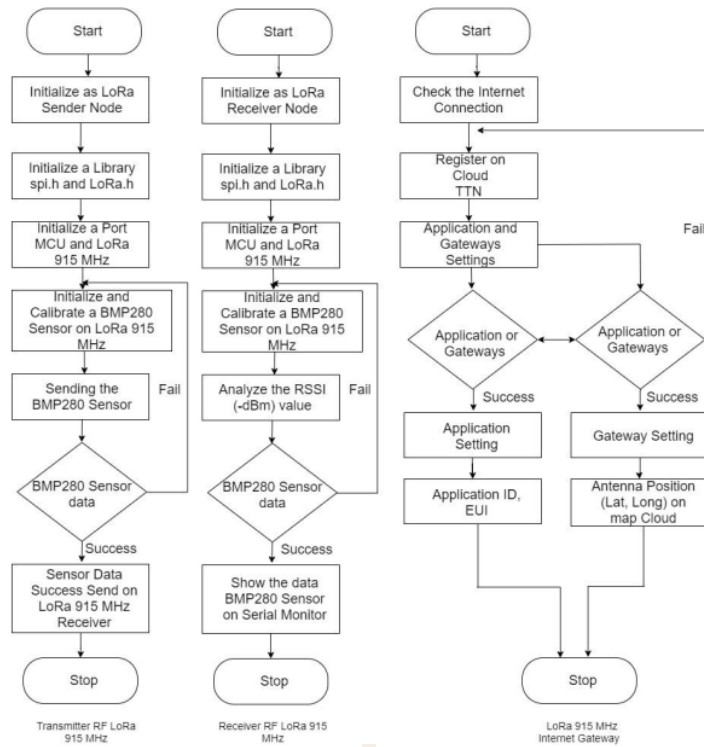
$$P_L \text{ dB} = 10 \log_{10} \frac{P_t}{P_r} \text{ dB} \quad (9)$$

Free space equation can be expressed as friss free space as in (10),

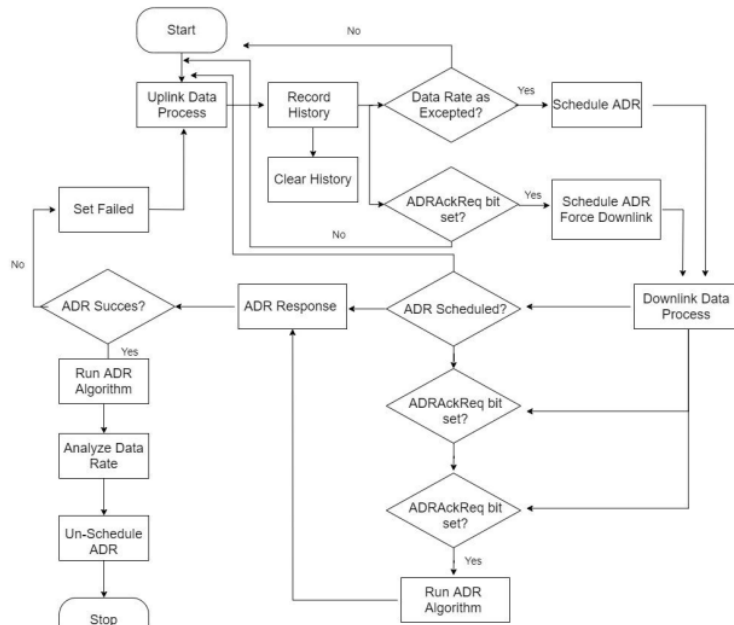
$$P_r = P_t G_t G_r \frac{\lambda^2}{(4\pi d)^2} \quad (10)$$

a distance (d) affects a signal strength at the Receiver (Rx). [29, 30] accordingly, the receiver signal strength is expressed by the parameter P_r (mW) or dB. In (11), the size of the power receiver (P_r) is determined by the power transmitter (P_t), gain on the transmitter (Gt) and receiver gain (Gr) and the length of the direct line-of-sight (LOS). in (11) there are 2 conditions where $d \geq d_s$ (cross over) and $d < d_s$ (cross over).

$$P_r = \begin{cases} \frac{G_t G_r \lambda^2}{(4\pi d)^2} & \text{if } d < d_s, \\ \frac{P_t G_t G_r h_t^2 h_r^2}{d^4} & \text{if } d \geq d_s, \end{cases} \quad (11)$$



(a)



(b)

Figure 2. (a) Flowchart of the research (b) Flowchart of ADR algorithm

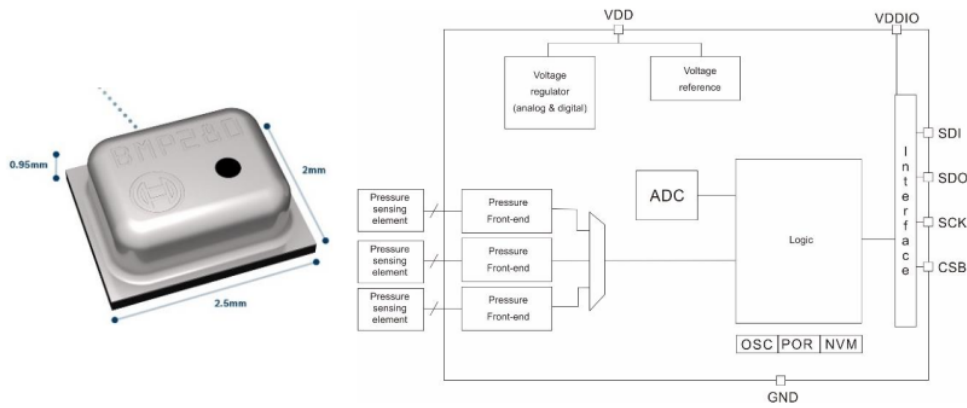


Figure 3. BME280 sensor and block diagram of BME280 sensor



Figure 4. RF96 chip for LoRa 915 MHz from MeRL keyence VHX digital microscope

Table 1. RFM95W spesification

Parameter	Details
Link Budget	168 dB (Maximum)
Constant RF Output vs V. Supply	+20 dBm-100 mW
Low RX Current	10.3 mA, 200 nA register retention
Modulation type	FSK, GFSK, MSK, GMSK, LoRa Tm and OOK modulation
Dynamic Range RSSI	127 dB
Packet engine	256 bytes with CRC

2.2.6. Signal to noise ratio (SNR) of LoRa

Signal to noise ratio (SNR) of LoRa is the amount of signal received or signal strength (dB) compared to noise level. SNR can be used to classify signal strength. Therefore, SNR equation can be seen in (12).

$$SNR_{-1} = \frac{Receive\ Signal\ Power\ (dB)}{Noise\ Power\ (dB)} \tag{12}$$

and the magnitude of SNR is also influenced by Channel gain, the amount of channel gain depends on the frequency of the radio wave transmitter (Hz) and distance (d). In (13) explains about the channel gain.

$$Channel\ gain_{-1} = 10 \log_{10} \left(\frac{\lambda^2}{4\pi^2} \cdot \frac{1}{d^2} \right) \text{ dB} \tag{13}$$

From (13), furthermore develop to (14).

$$\text{Channel gain}_2 = 10 \log_{10} \left(\frac{\lambda^2}{4\pi^2 d} \right) - 20 \log_{10} (d) \text{ dB} \quad (14)$$

In (12), receive signal power (dB) is equal to transmit power multiply channel gain, therefore, the equation becomes to (15).

$$\text{SNR}_2 = \frac{\text{Transmit Power} \cdot \text{Channel Gain (dB)}}{\text{Noise Power (dB)}} \quad (15)$$

Therefore, from (14), it can be concluded that SNR is influenced by the magnitude of radio wave frequency (Hz) and distance. The farther the distance between Tx and Rx, the greater the signal to noise ratio (dB) value means the greater the interference that occurs in the signal or the lower the signal reception (RSSI) (dBm). In this case, RSSI (dBm) is affected by the Noise value and signal interference.

2.2.7. LoRa parameters packet

LoRa Packet is initialized with explicit header and implicit header mode, explicit header consists of preamble, header, payload, and payload CRC, while implicit header mode consists of preamble, payload and payload CRC. Other important parameters owned by LoRa are spreading factor (SF), bandwidth (BW) and code rate (CR), the value of CR is 1-4, SF value is 7-12, this value is given to LoRa when transmitting data based on factor distances (m). Bandwidth is also called RC (Chip Rate) LoRa consists of 500 kHz, 250 kHz and 125 kHz. furthermore, the process of transmitting LoRa data in 1 second expressed by T_s , T_s calculation can be seen in (16).

$$T_s = \frac{2^{SF}}{BW} \quad (16)$$

Furthermore, LoRa data transmission can be determined per 1 second, with different spreading factor values that will produce different data transmission. The next parameter is the symbol rate (R_s). R_s is formulated as in (17).

$$R_s = \frac{BW}{2^{SF}} \quad (17)$$

Therefore, from (17) a symbol rate can be generated. Symbol rate values differ based on bandwidth width (KHz) and spreading factor (SF). The next parameter is R_b , R_b is the data rate or bit rate (bps), this parameter is very important in the analysis of LoRa data transmission in (18) and (19), by analyzing the value of R_b means that it can find out the Quality of Services (QoS) of LoRa data transmission.

$$R_b = SF \times \frac{BW}{2^{SF}} \times CR \quad (18)$$

$$R_b = SF \times \frac{\left[\frac{4+CR}{2^{SF}} \right]}{\left[\frac{BW}{2^{SF}} \right]} \times 1000 \quad (19)$$

$$\text{ToA or } T_{\text{Packet}} = T_{\text{Preamble}} + T_{\text{Payload}} \quad (20)$$

ToA or time on air (ms) is the sum of time preamble and time payload in second units. And to get the value of T_{Preamble} can be seen in (21).

$$T_{\text{Preamble}} = (n_{\text{Preamble}} + 4.25) T_s \quad (21)$$

as for T_{Payload} , it can be formulated in (22).

$$T_{\text{Payload}} = T_s (8 + \max(\text{ceil}((8\text{PL}-4\text{SF}+28+16\text{CRC}-20\text{H})/4(\text{SF}-2\text{DE})), (\text{CR}+4), 0)) \quad (22)$$

2.2.8. Packet BME280 sensor data delivery

The BME280 sensor data transmission is done in 2 ways, the free space path loss (FSPL) method and obstacle here e.g, tree, building, hill or mountain, for the resulting output is the receiver signal strength indicator (RSSI (-dBm) parameter), for more details, add the SNR (signal noise ratio (-dB))

A performance of radio frequency and signal strength of LoRa with... (Puput Dani Prasetyo Adi)

parameter. furthermore, sensor data BME280 e.g, temperature (DegC), barometric pressure (hPa), and humidity (%). The output is obtained from the Arduino serial monitor on the transmitter, receiver, and application server IoT (Thingspeak). Figure 5 (a) is sending Tx LoRa 915 MHz data at free space path loss (FSPL) and Figure 5 (b) is sending Tx LoRa 915 MHz data when obstacles are present.



Figure 5. (a) Communication Tx and Rx LoRa 915 MHz on FSPL,
(b) Communication Tx and Rx LoRa 915 MHz on Obstacles

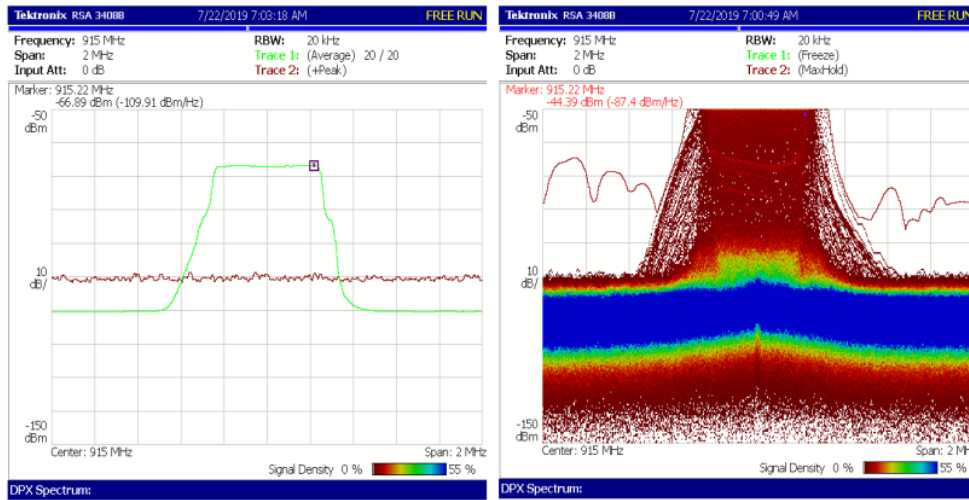
3. RESULTS AND ANALYSIS

3.1. Radio frequency LoRa 915 MHz with signal analyzer

Figures 6 (a), 6 (b), 7 (a), and 7 (b) are various outputs of the RSA 3408B Realtime Spectrum Analyzer DC-8 GHz DPX technology electronic analyzer, signal LoRa E32915T20D at frequency 915 MHz as center value. Therefore, the analyzer records LoRa transmitting data activity at frequency 915 MHz as center frequency, this signal shows signal LoRa with receiver sensitivity (dBm) value and signal noise ratio (dB) value.

Data rate or Bit rate (Br) is also determined by the Spreading Factor, from the Spreading Factor (SF) parameter another parameter can be obtained e.g, Payload, data rate, bit rate, and receiver sensitivity. More fully, about LoRa Spreading Factor and Data Rate can be seen in Figure 8 (a, b) shows the relationship between LoRa Bandwidth and Spread Factor which determines the speed of transmitting LoRa data or time on air (ms) and determines the bit rate (bps). In Figure 8(a) can be seen that the 125 kHz Bandwidth has the longest Time on Air of 2465.79 ms on Spreading Factor 12, and the bandwidth of 500 kHz is 534.53 ms. meaning that the wider the bandwidth the faster the data transmits even though it is in Spreading Factor 12. In this case, Bandwidth determines the quality of the receiving signal from tx to Rx, the greater the bandwidth, the better the quality of the signal produced. The value of Time on Air is shown in (20). furthermore, Thingspeak Application Server, in the Application server important data that can be used as a key is the Application Programming Interface (API), i.e, Write API and Read API. therefore, the sensor

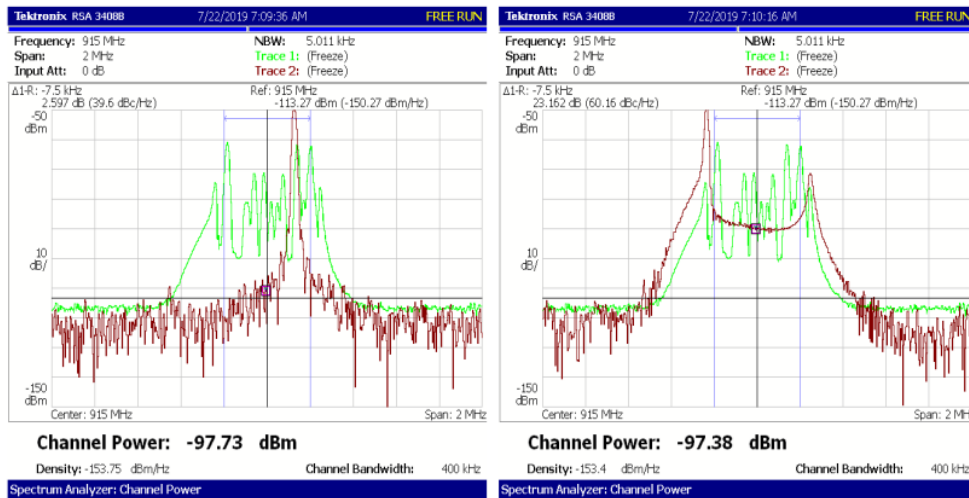
data output can be seen in Figure 9. moreover, RSSI (-dBm) shows a value of -34 dBm at a distance of 1 meter, for further analysis a Receiver Receiver will be placed at a distance of up to 1 Km, to ensure the strength of LoRa at a great distance, and to the Free Space area (Figure 5(a)) and Obstacle (Tree, Building, Hill, etc.) (Figure 5(b)). From the comparison signals in 3 conditions, i.e. Free Space, Building Obstacle and Hill+Tree Obstacle, it was concluded that Building and Hill had a great value in terms of attenuation. Free Space is the lowest at a distance of 1 when it is compared to the obstacle, this is influenced by the Reflected signal factor, diffraction signal, and scattering signal during data transmission from Transmitter to Receiver in Figure 5.



(a)

(b)

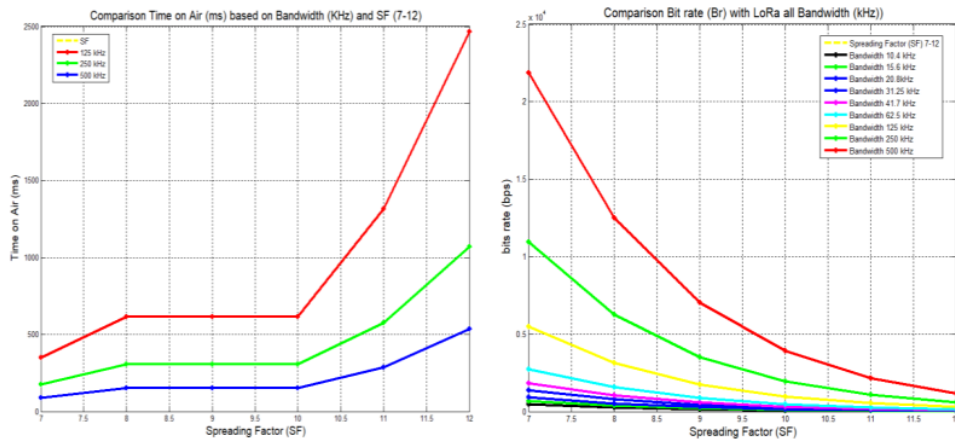
Figure 6. (a) Signal LoRa 915 MHz with peak setting, (b) LoRa 915 MHz signal with trace bitmap



(a)

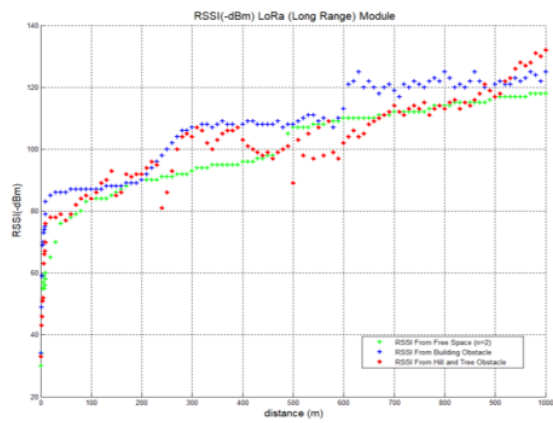
(b)

Figure 7. (a) Signal LoRa with a normal setting, (b) Signal LoRa with intermediate surges

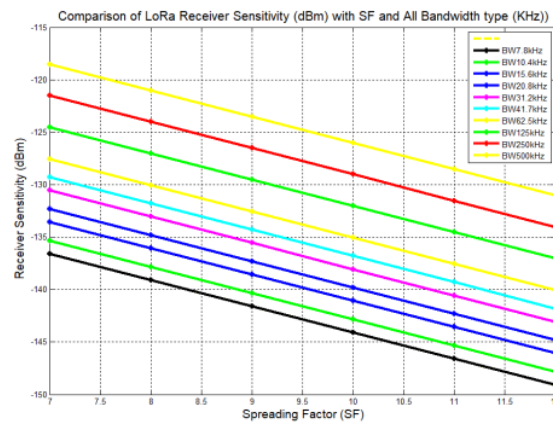


(a)

(b)



(c)



(d)

Figure 8. (c) RSSI (-dBm) comparison result from 3 conditions propagation, (d) LoRa Receiver Sensitivity (dBm) NF=6 dB (continue)

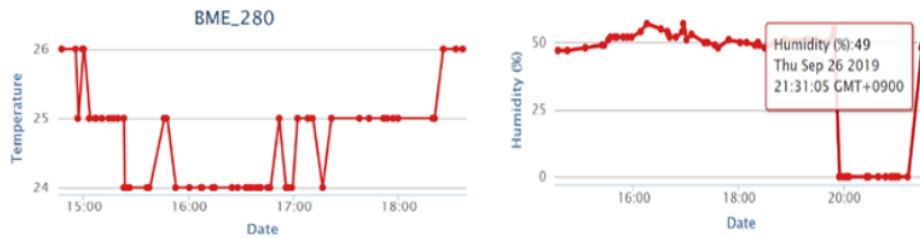


Figure 9. Output temperature (C) and humidity (%) of BME280 sensor on application server

4. CONCLUSION

The process of sending BME280 sensor data uses long range 915 MHz radio frequency at a distance of more than 1 km in the Kakuma-Machi-Ishikawa Kanazawa mountain range-Japan has difficulties due to tight obstacle problems, but the research can be carried out in 3 different conditions (free space area, building obstacle and hills and tree obstacle) that produce different values, where building obstacle gives a greater attenuation (-dBm) value. And free space is the best condition for sending BME280 sensor signals using LoRa at a distance of > 1 km. moreover, the LoRa 915 MHz signal can be analyzed using the signal analyzer and produces a signal strength value (-dBm). Signal LoRa 915 MHz can also be analyzed using signal analyzer. But this research needs to be developed with a more complex communication system, i.e. mesh networking uses 915 MHz LoRa with multi-sensor nodes, parameters of quality of service (QoS) are added to add quality and contribution to paper, budget link parameters such as byte rate, throughput, packet loss, air data rate, etc. The BME280 sensor output can be sent via sensor nodes to the graphical internet via the LoRa internet gateway, with the halpeak application server. The analysis process is on the internet of things (IoT) system and data analysis on the LoRa internet gateway and analysis on uplink, downlink processes and quality of service (QoS) on the internet gateway.

ACKNOWLEDGEMENTS

Thank you to the Micro Electronics Research Laboratory (MeRL), Kanazawa University-Japan, which allows the author to do research, thank you for the equipment that can be used, e.g. Textronix Signal Analyzer. Furthermore, Thanks to Professor Akio Kitagawa who assisted in the process of correcting the manuscript and providing opportunities in developing research in the field of Wireless Communication and the Internet of Things.

REFERENCES

- [1] Parenreng J. M., Kitagawa A., "Resource optimization techniques and security levels for wireless sensor networks based on the ARSY framework," *Sensors*, vol. 18, no. 5, 2018. DOI: 10.3390/s18051594.
- [2] Cilfone A., Davoli L., Belli L., Ferrari G., "Wireless Mesh Networking: An IoT-Oriented Perspective Survey on Relevant Technologies," *Future Internet*, vol. 11, no.4, pp. 99, 2019.
- [3] Rashmi Sharan Sinha, Yiqiao Wei, Seung-Hoon Hwang, "A Survey on LPWA technology:LoRa and NB-IoT," *ScienceDirect, ICT Express* 3, pp. 14-21, 2017. DOI: 10.1016/j.icte.2017.03.004.
- [4] Lauridsen Mads, Nguyen Huan Cong, Vejlgard Benny, Kovacs Istvan, Mogensen Preben Elgaard, Sørensen Mads, "Coverage comparison of GPRS, NB-IoT, LoRa, and SigFox in a 7800 km² area," *Aalborg Universitet, 2017 IEEE 85th Vehicular Technology Conference (VTC Spring)*, 2017. DOI: 10.1109/VTCSpring.2017.8108182.
- [5] Kim D. H., Lee E. K., Kim J., "Experiencing LoRa Network Establishment on a Smart Energy Campus Testbed," *Sustainability*, vol. 11, no. 7, 2019. DOI: 10.3390/su11071917.
- [6] Bin Ge, Kai Wang, Jianghong Han, and Bao Zhao, "Improved RSSI Positioning Algorithm for Coal Mine Underground Locomotive," *Journal of Electrical and Computer Engineering*, vol. 2015, no. 3, pp. 1-8, 2015.
- [7] Dimitrios Loukatos, Ioannis Manolopoulos, Evangelia-Sofia Arvaniti, Kostas G. Arvanitis, Nick A. Sigrimis, "Experimental Testbed for Monitoring the Energy Requirements of LPWAN Equipped Sensor Nodes," *ScienceDirect, IFAC PapersOnLine*, vol. 51, no. 17, pp. 309-313, 2018.
- [8] P. P. Ray, "A survey on Internet of Things architectures," *Journal of King Saud University-Computer and Information Sciences, ScienceDirect*, vol. 30, no. 3, 2018. DOI: 10.1016/j.jksuci.2016.10.003.
- [9] Puput Dani Prasetyo Adi and Akio Kitagawa, "Performance Evaluation WPAN of RN-42 Bluetooth based (802.15.1) for Sending the Multi-Sensor LM35 Data Temperature and RaspBerry Pi 3 Model B for the Database and Internet Gateway," *International Journal of Advanced Computer Science and Applications(IJACSA)*, vol. 9, no. 12, 2018. DOI: 10.14569/IJACSA.2018.091285.

- [10] Yonghua Song, Jin Lin, Ming Tang, Shufeng Dong, "An Internet of Energy Based on Wireless LPWAN," *ScienceDirect, Engineering Journals*, 2017. DOI: 10.1016/J.ENG.2017.04.011.
- [11] Puput Dani Prasetyo Adi and Akio Kitagawa, "ZigBee Radio Frequency (RF) Performance on Raspberry Pi 3 for Internet of Things (IoT) based Blood Pressure Sensors Monitoring," *International Journal of Advanced Computer Science and Applications(IJACSA)*, vol. 10, no. 5, 2019. DOI: 10.14569/IJACSA.2019.0100504.
- [12] Puput Dani Prasetyo Adi and Akio Kitagawa, "Quality of Service and Power Consumption Optimization on the IEEE 802.15.4 Pulse Sensor Node based on Internet of Things," *International Journal of Advanced Computer Science and Applications(IJACSA)*, vol. 10, no. 5, 2019. DOI: 10.14569/IJACSA.2019.0100518.
- [13] Muhammad Niswar, Amil Ahmad Ilham, Elyas Palantei, Rhiza S.Sadjad, Andani Ahmad, Ansar Suyuti, Indrabayu, Zaenab Muslimin, Tadjuddin Waris, Puput Dani Prasetyo Adi, "Performance evaluation of ZigBee-based wireless sensor network for monitoring patients' pulse status," *2013 International Conference on Information Technology and Electrical Engineering (ICITEE)*, 2013. DOI: doi/10.1109/ICITEE.2013.6676255.
- [14] Wongeun Choi, Yoon-Seop Chang, Yeonuk Jung and Junkeun Song, "Low-Power LoRa Signal-Based Outdoor Positioning Using Fingerprint Algorithm," *International Journal of Geo-Information, MDPI*, vol. 7, no. 11, 2018, DOI: 10.3390/ijgi7110440.
- [15] Li Shengyang, Usman Raza, and Khan Aftab, "How Agile is the Adaptive Data Rate Mechanism of LoRaWAN?," *IEEE Globecom 2018 Abu Dhabi, UAE*, 2018. DOI : 10.1109/GLOCOM.2018.8647469.
- [16] Sergio Barrachina-Muñoz, Boris Bellalta, Toni Adame, Albert Bel, "Multi-hop communication in the uplink for LPWANs," *Computer Networks*, vol. 123, pp. 153-168, 2017. DOI: 10.1016/j.comnet.2017.05.020.
- [17] V. Fialho, F. Azevedo, "Wireless Communication Based on Chirp Signal for LoRa IoT Devices," *i-ETC:ISEL Academic Journal of Electronics, Telecommunications and Computers*, vol. 4, no. 1, 2018.
- [18] Galati Gaspare, Gabriele Pavan, Francesco De Palo, "Chirp Signal and Noisy Waveforms for Solid-State Surveillance Radars," *Aerospace, MDPI*, 2017. DOI : 10.3390/aerospace4010015.
- [19] Puput Dani Prasetyo Adi and Akio Kitagawa, "Performance Evaluation of E32 Long Range Radio Frequency 915 MHz based on Internet of Things and Micro Sensors Data," *International Journal of Advanced Computer Science and Applications (IJACSA)*, vol. 10, no. 11, 2019. DOI: doi/10.14569/IJACSA.2019.0101106.
- [20] Taoufik Bouguera, Jean-Francois Diouris, Jean-Jacques Chaillout, Randa Jaouadi and Guillaume Andrieux, "Energy Consumption Model for Sensor Nodes Based on LoRa and LoRaWAN," *MDPI Sensor*, vol. 18, no. 7, 2018. DOI: 10.3390/s18072104
- [21] Dmitry Bankov, Evgeny Khorov, and Andrey Lyakhov, "On the Limits of LoRaWAN Channel Access," *2016 International Conference on Engineering and Telecommunication (EnT)*, pp. 10-15, November 2016, DOI: 10.1109/EnT.2016.011
- [22] Ferran Adelantado, Xavier Vilajosana, Pere Tuset-Peiro, Borja Martinez, Joan Melià-Seguí, Thomas Watteyne, "Understanding the Limits of LoRaWAN," *IEEE Communications Magazine*, vol. 55, no. 9, September 2017. DOI: 10.1109/MCOM.2017.1600613.
- [23] Martin Bor, John Vidler, Utz Roedig, "LoRa for the Internet of Things," *EWSN '16 Proceedings of the 2016 International Conference on Embedded Wireless Systems and Networks, Junction Publishing, AUT*, pp. 361-366, 2016. ISBN 9780994988607.
- [24] Martin Bor, Utz Roedig, "LoRa Transmission Parameter Selection," *2017 13th International Conference on Distributed Computing in Sensor Systems (DCOSS)*, 2017. DOI: 10.1109/DCOSS.2017.10.
- [25] Fan Wu, Taiyang Wu and Mehmet Rasit Yuce, "An Internet-of-Things (IoT) Network System for Connected Safety and Health Monitoring Applications," *Sensor MDPI*, 2019. DOI:10.3390/s19010021.
- [26] Hayati,nur ;Suryanegara, Muhammad, "The IoT LoRa system design for tracking and monitoring patient with mental disorder", *2017 IEEE International Conference on Communication, Networks and Satelite (Comnetsat)*, 2017. DOI: 10.1109/COMNETSAT.2017.8263587
- [27] Mohammad Shahidul Islam, Mohammad Tariquul Islam, Ali F. Almutairi, Gan Kok Beng, Norbahiah Misran and Nowshad Amin, "Monitoring of the Human Body Signal through the Internet of Things (IoT) Based LoRa Wireless Network System," *Applied Science*, vol. 8, no. 9, 2019. DOI: 10.3390/app9091884.
- [28] The Aloys Augustin, Jiazi Yi, Thomas Clausen and William Mark Townsley, "A Study of LoRa: Long Range & Low Power Networks for the Internet of Things," *Sensor MDPI*, vol. 16, no. 9, pp. 1466, 2016.
- [29] Irawan Sukma, Akio Kitagawa, "Comparison Topologies of Resonant Tank from Class-C Wireless Power Transfer," *2018 IEEE International Workshop on Electromagnetics: Applications and Student Innovation Competition (iWEM)*, 2018. DOI: 10.1109/iWEM.2018.8536684.
- [30] Muhammad Fauzan Edy Purnomo, Hadi Suyono, Panca Mudjirahardjo, Rini Nur Hasanah, "Analysis Performance of Singly-Fed Circularly Polarized Microstrip Antenna For Wireless Communication," *Jurnal Teknologi*, vol. 78, no. 5-9, 2016. E-ISSN. 2180-3722.

A performance of radio frequency and signal strength of LoRa with BME280 senso

ORIGINALITY REPORT

13%

SIMILARITY INDEX

8%

INTERNET SOURCES

8%

PUBLICATIONS

4%

STUDENT PAPERS

PRIMARY SOURCES

- | | | |
|---|--|----|
| 1 | Submitted to De Montfort University
Student Paper | 1% |
| 2 | Yuli Afril Liani, Ibnu Rasyid Munthe, Deci Irmayani, Bayu Eko Broto et al. "The Broiler Chicken Coop Temperature Monitoring Use Fuzzy Logic and LoRAWAN", 2021 3rd International Conference on Electronics Representation and Algorithm (ICERA), 2021
Publication | 1% |
| 3 | pubs.ascee.org
Internet Source | 1% |
| 4 | hdl.handle.net
Internet Source | 1% |
| 5 | Puput Dani Prasetyo Adi, Akio Kitagawa. "A Study of LoRa Performance in Monitoring of Patient's SPO2 and Heart Rate based IoT", International Journal of Advanced Computer Science and Applications, 2020
Publication | 1% |

6	Bin Ge, Kai Wang, Jianghong Han, Bao Zhao. "Improved RSSI Positioning Algorithm for Coal Mine Underground Locomotive", Journal of Electrical and Computer Engineering, 2015 Publication	1 %
7	eprints.umm.ac.id Internet Source	1 %
8	Submitted to Universiti Teknologi Petronas Student Paper	<1 %
9	Laura García García. "Architecture and communication protocol to monitor and control water quality and irrigation in agricultural environments", Universitat Politecnica de Valencia, 2021 Publication	<1 %
10	Submitted to Atlantic International University Student Paper	<1 %
11	mafiadoc.com Internet Source	<1 %
12	researchonline.ljmu.ac.uk Internet Source	<1 %
13	Submitted to University of Northumbria at Newcastle Student Paper	<1 %
14	Submitted to Florida Virtual School Student Paper	<1 %

15

Submitted to Ho Chi Minh University of
Technology and Education

Student Paper

<1 %

16

Submitted to National University of Singapore

Student Paper

<1 %

17

Submitted to Study Group Australia

Student Paper

<1 %

18

pdfs.semanticscholar.org

Internet Source

<1 %

19

deepai.org

Internet Source

<1 %

20

www.mdpi.com

Internet Source

<1 %

21

Shilpa Devalal, A. Karthikeyan. "LoRa
Technology - An Overview", 2018 Second
International Conference on Electronics,
Communication and Aerospace Technology
(ICECA), 2018

Publication

<1 %

22

Shuxing Du, Bo Liu, Huixun Ma, Guoying Wu,
Peng Wua. "IIOT-based Intelligent Control and
Management System for Motorcycle
Endurance Test", IEEE Access, 2018

Publication

<1 %

23

dokumen.pub

Internet Source

<1 %

24

ijarai.thesai.org

Internet Source

<1 %

25

Mohammed Alenezi, Kok Keong Chai, Yue Chen, Shihab Jimaa. "Ultra-Dense LoRaWAN: Reviews and Challenges", IET Communications, 2019

Publication

<1 %

26

Muhammad Rizky Eka Arlin, Muhammad Niswar, Adnan Adnan, Doudou Fall, Shigeru Kashihara. "LouPe: LoRa Performance Measurement Tool", 2018 2nd East Indonesia Conference on Computer and Information Technology (EIConCIT), 2018

Publication

<1 %

27

Zaeefa A. Pandangan, Marc Caesar R. Talampas. "Hybrid LoRaWAN Localization using Ensemble Learning", 2020 Global Internet of Things Summit (GloTS), 2020

Publication

<1 %

28

Zheng Wang, ZhenQiang Xu, BaiShun Dong, WeiMin Xu, Jing Yang. "Dandelion: An Online Testbed for LoRa Development", 2019 15th International Conference on Mobile Ad-Hoc and Sensor Networks (MSN), 2019

Publication

<1 %

29

csn.khai.edu

Internet Source

<1 %

- | | | |
|----|---|------|
| 30 | repository.uin-suska.ac.id
Internet Source | <1 % |
| 31 | res.mdpi.com
Internet Source | <1 % |
| 32 | s-space.snu.ac.kr
Internet Source | <1 % |
| 33 | Jenhui Chen, Wei-Kuang Tan, Chih-Chieh Wang. "MCAS: a macrocell channel allocation scheme for broadband wireless access networks", WiMob'2005), IEEE International Conference on Wireless And Mobile Computing, Networking And Communications, 2005., 2005
Publication | <1 % |
| 34 | Oliviero Riganelli. "On the fault tolerance of mobile ad hoc networks", ITI 2008 - 30th International Conference on Information Technology Interfaces, 06/2008
Publication | <1 % |
| 35 | Shamim Yousefi, Hadis Karimipour, Farnaz Derakhshan. "Data Aggregation Mechanisms on the Internet of Things: A Systematic Literature Review", Internet of Things, 2021
Publication | <1 % |
| 36 | Shu-Yang Gao, Xiao-Hong Li, Mao-De Ma. "A Malicious Behavior Awareness and Defense | <1 % |

Countermeasure Based on LoRaWAN Protocol", Sensors, 2019

Publication

37

www.iot-store.com.au

Internet Source

<1 %

38

Puput Dani Prasetyo Adi, Akio Kitagawa, Junichi Akita. "Finger Robotic control use M5Stack board and MQTT Protocol based", 2020 7th International Conference on Information Technology, Computer, and Electrical Engineering (ICITACEE), 2020

Publication

<1 %

Exclude quotes Off

Exclude matches Off

Exclude bibliography On

A performance of radio frequency and signal strength of LoRa with BME280 senso

GRADEMARK REPORT

FINAL GRADE

GENERAL COMMENTS

/0

Instructor

PAGE 1

PAGE 2

PAGE 3

PAGE 4

PAGE 5

PAGE 6

PAGE 7

PAGE 8

PAGE 9

PAGE 10

PAGE 11

PAGE 12
